

Show Me The Disability Data: An ongoing conversation about the questions we ask.

Adrienne Miao, PhD
adrienne.miao@uvm.edu

Representation in data is a disability equity issue, and HOW we ask about disability affects WHO responds.



Scan this code



THE UNIVERSITY OF VERMONT
CENTER ON DISABILITY & COMMUNITY INCLUSION

Right now, we ask event attendees about their "relationship to disability"

What is your relationship to disability? (You can choose more than one.)

- Youth or young adult with a disability (younger than 18)
- Adult with a disability
- Self-advocate
- Peer-advocate
- Parent or caregiver of a person with a disability
- Another family member of a person with a disability
- Ally
- Professional working with people with disabilities
- Something not listed (please write in below)
-
- I prefer not to answer

But...12% of attendees choose not to answer.

So how can we be more inclusive?

What if we used the [Washington Group Questions](#) instead?

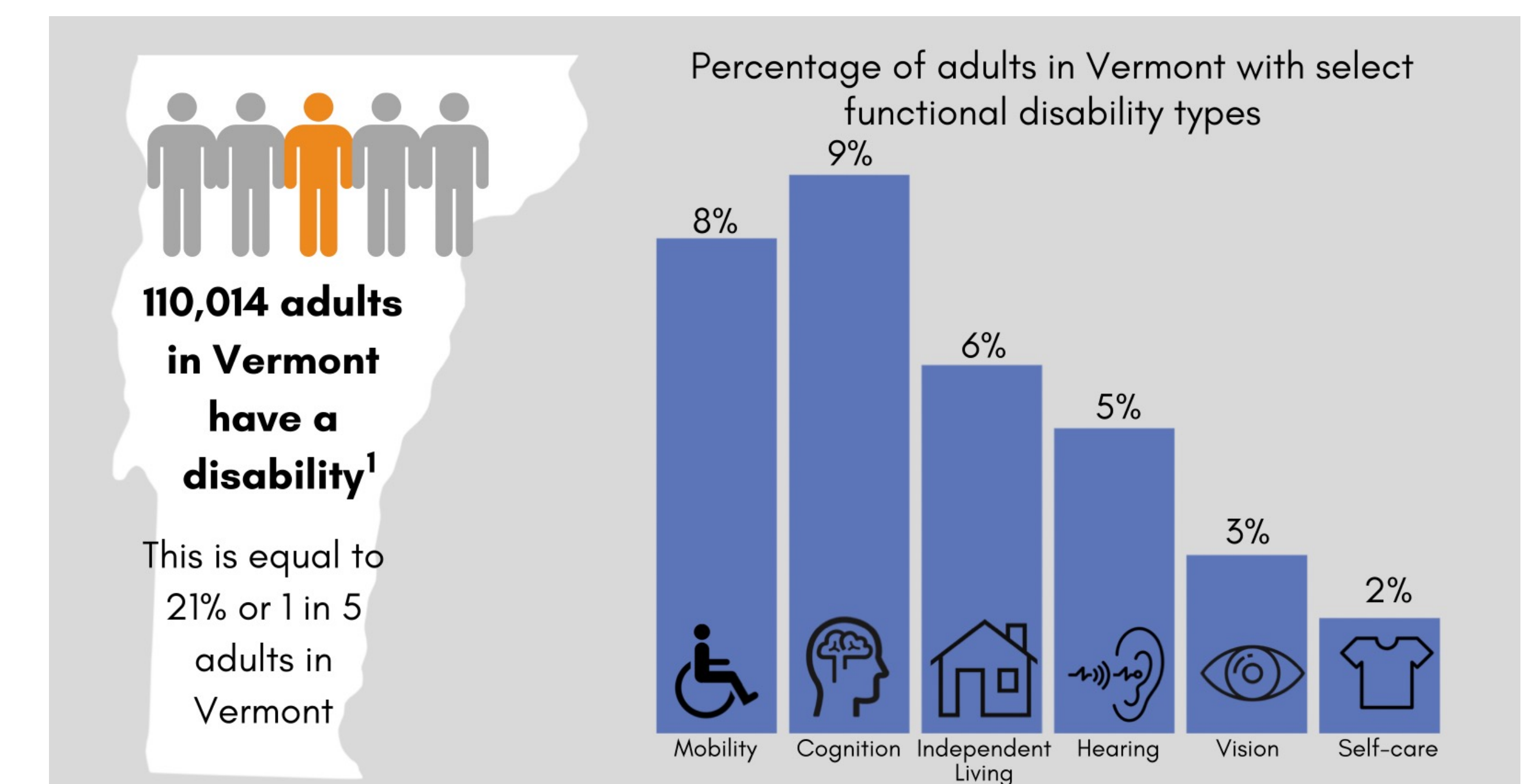
If we use a measure of disability domains in our demographics surveys

SIX QUESTIONS ON SHORT SET

- Do you have difficulty seeing, even if wearing glasses?
- Do you have difficulty hearing even if using a hearing aid?
- Do you have difficulty walking or climbing steps?
- Do you have difficulty remembering or concentrating?
- Do you have difficulty (with self-care such as) washing all over or dressing?
- Using your usual language, do you have difficulty communicating or being understood?



Then we could directly compare our data with population data



If we adapt that measure of disability domains to be part of our registration

12:29

Please describe if you would benefit from accommodations to address:

- difficulty seeing
- difficulty hearing
- difficulty walking or climbing stairs



Then we can better design for the accessibility needs of our participants

